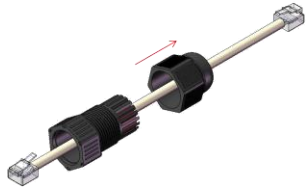
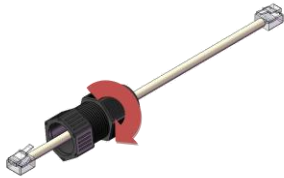
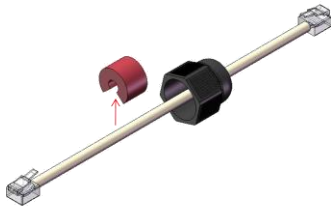


GM67X-CS-B or GM67X-CS-R Cable Disassembly Instructions:

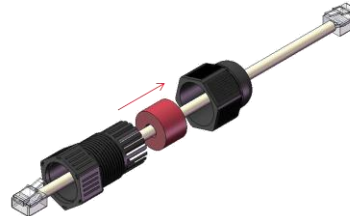
1. Unscrew seal nut from GM67X-CS-R or GM67X-CS-B assembly. Then slide the GM67X-CS-R or GM67X-CS-B seal nut off GM67X-CS-R or GM67X-CS-B body as shown.



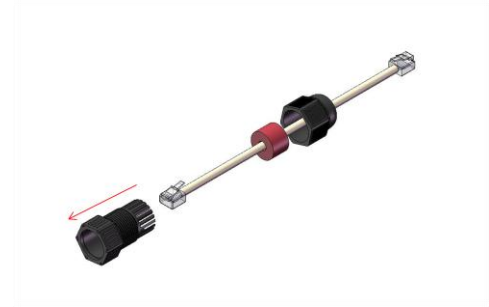
4. Spread GM67X-CS-R or GM67X-CS-B seal apart to remove from cable.



2. Slide the GM67X-CS-R or GM67X-CS-B seal out of GM67X-CS-R or GM67X-CS-B body as shown.



3. Slide the GM67X-CS-R or GM67X-CS-B body off cable as shown.



5. Slide GM67X-CS-R or GM67X-CS-B seal nut off cable as show.

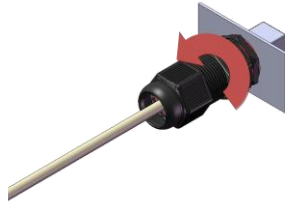


GM67X Disassembly Instructions:

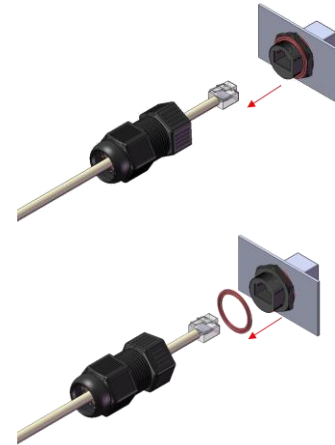
1. Unscrew GM67X-CS-R or GM67X-CS-B seal nut.



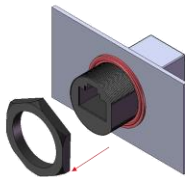
2. Unscrew GM67X-CS-R or GM67X-CS-B body from GM67X-S-88 or GM67X-CBL-xxx-P body.



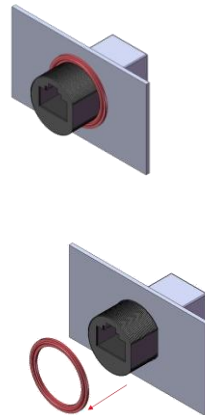
3. Remove cable side assembly from GM67X-S-88 or GM67X-CBL-xxx-P body. Then remove cable side gasket from GM67X-S-88 or GM67X-CBL-xxx-P body on outside of panel.



4. Unscrew nut from GM67X-S-88 or GM67X-CBL-xxx-P body on outside of panel.



5. Remove GM67X-S-88 or GM67X-CBL-xxx-P gasket from GM67X-S-88 or GM67X-CBL-xxx-P body.



6. Remove GM67X-S-88 or GM67X-CBL-xxx-P body from panel.

